



H-Fax Voicemail Center for Lotus Notes

REQUIREMENTS

Workstation Platforms: Windows 7/Vista/XP/2000/NT/98/95
Workstation Software: Lotus Notes 8/7/6/5 or Web client, Fax Viewer 2.1 (free)
Server Platforms: Windows 2008/2003/XP/2000/NT
Server Software: Lotus Domino 8/7/6/5, HFMC 6.0 for Windows
Server Hardware: Fax Modem or Voice Fax Modem

END USER INSTALLATION INSTRUCTIONS

Lotus Notes and Web client users can view faxes using the free software below.

Fax Viewer 2.1 for Windows (521 KB)

Open attachment below, or Download: [http://www.ivesco.com/home.nsf/dl/ive/\\$file/faxviewer.exe](http://www.ivesco.com/home.nsf/dl/ive/$file/faxviewer.exe)



faxviewer.exe

Lotus Notes client users can send faxes to email addresses using the free software below. Notes users can send faxes from most Windows-based applications by simply selecting the Lotus Print-to-Fax (PTF) driver from the File - Print menu. The Print-to-Fax driver allows users to address outgoing faxes using their Personal Address Books or the Domino Directory, Save fax message in Notes mailbox (Sent view), and convert the document into faxable format. NOTE: An API is included which can be used from most word processing software packages.

Lotus Print to Fax 2004 printer driver for Windows (2.3 MB)

Open attachment below, or Download: [http://www.ivesco.com/home.nsf/dl/ive/\\$file/ptfwin2000XP.exe](http://www.ivesco.com/home.nsf/dl/ive/$file/ptfwin2000XP.exe)



ptfwin2000XP.exe

SERVER INSTALLATION INSTRUCTIONS

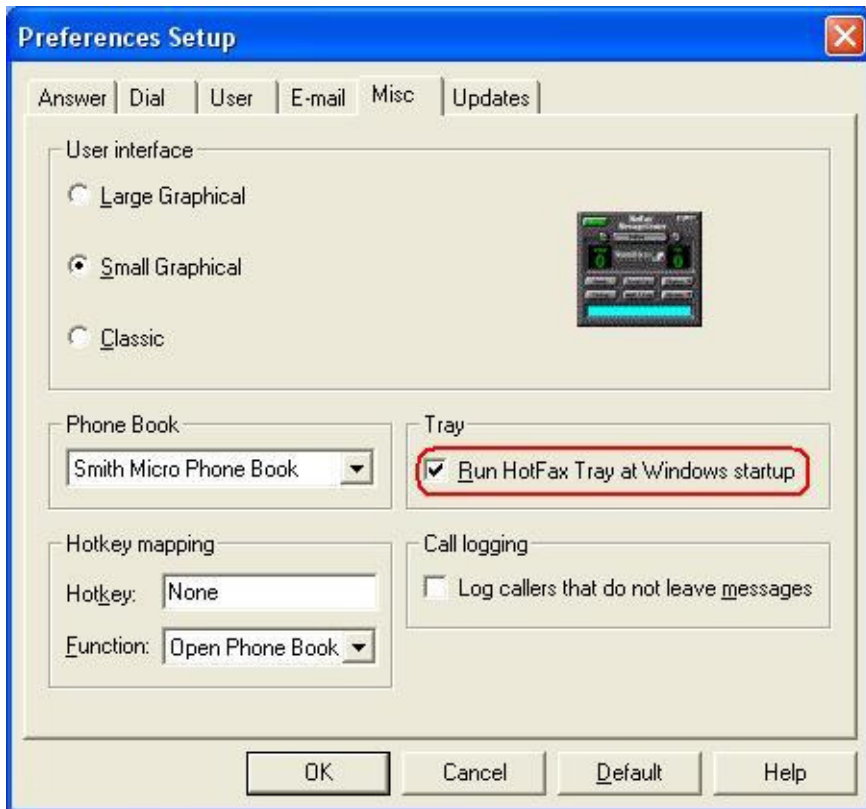
The fax and voicemail solution requires 2 modules which must be installed on the same Domino Windows server: (1) H-Fax Voicemail Center Lotus Notes database, and (2) HFMC for Windows.

1. Click the web link below to download and install HFMC for Windows on a Domino Windows server. Single digit mailbox install is recommended for optimal DTMF touch-tone detection. You can configure HFMC to automatically start as a Windows Program Startup group. HFMC currently is not supported as a Windows Service.

Windows Program Startup group: This option requires a Windows account to be logged-in to the Domino server at all times, otherwise, HFMC will not work. During installation select HotFax Tray to automatically start on Windows startup when prompted (adds Shortcut called HotFax Tray to current user's Programs Startup group). You can verify the HotFax Tray is enabled as seen in the Preferences Setup below. It is recommended to cut/paste the HotFax Tray Shortcut from the Programs Startup group (current user) to Startup group (All Users). For example, if installing on Win2003/2000 Server move the HotFax Tray Shortcut from "C:\Documents and Settings\Administrator\Start Menu\Programs\Startup" to "C:\Documents and Settings\All Users\Start Menu\Programs\Startup". For example, if installing on Win2008 Server move the HotFax Tray Shortcut from "C:\Users\Administrator\AppData\Roaming\Microsoft\Windows\Start Menu" to "C:\ProgramData\Microsoft\Windows\Start Menu\Programs\Startup".

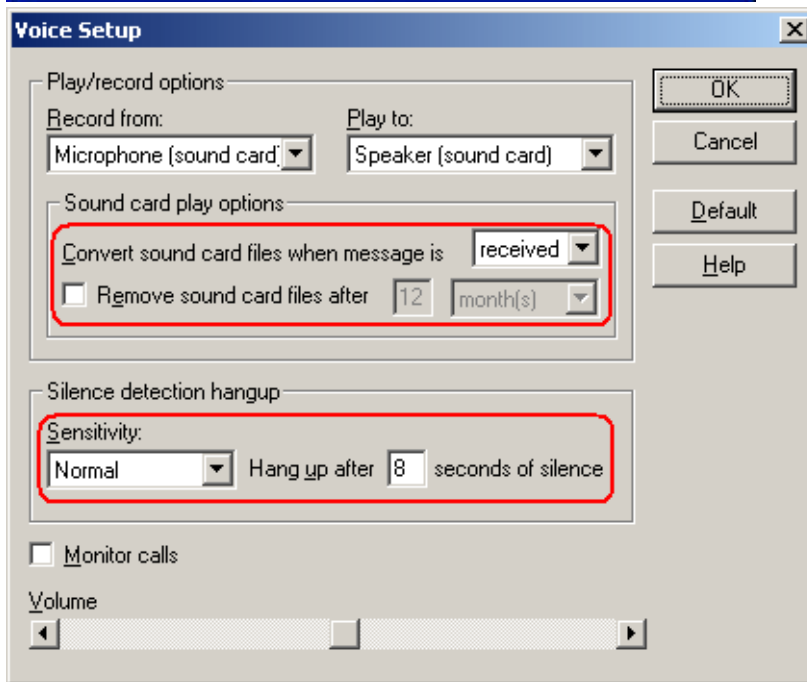
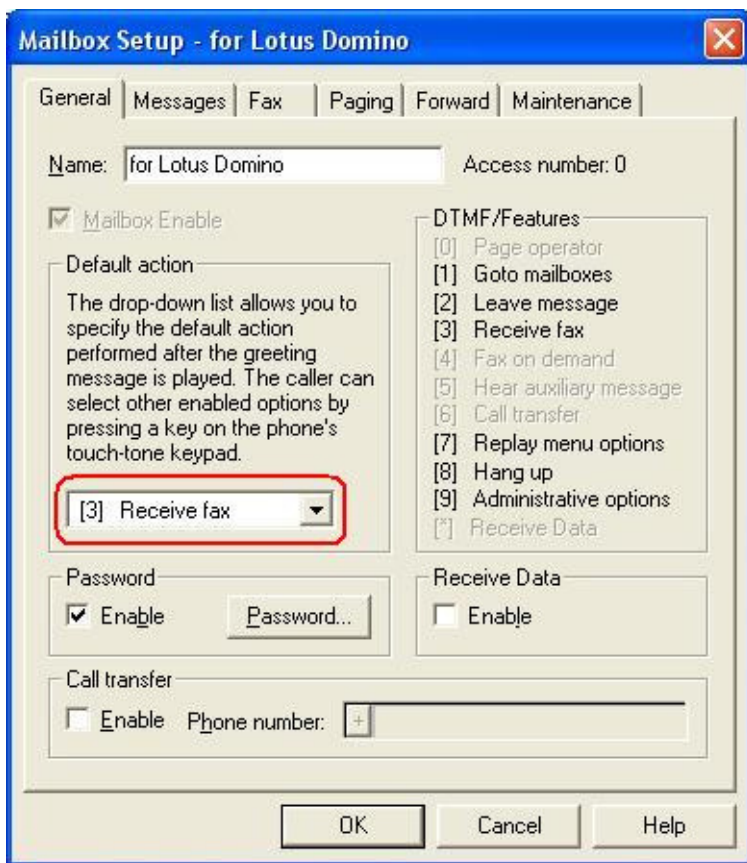
HFMC 6.0 for Windows (17.6 MB)

Download: [http://www.ivesco.com/home.nsf/dl/ive/\\$file/HFMC6.exe](http://www.ivesco.com/home.nsf/dl/ive/$file/HFMC6.exe)

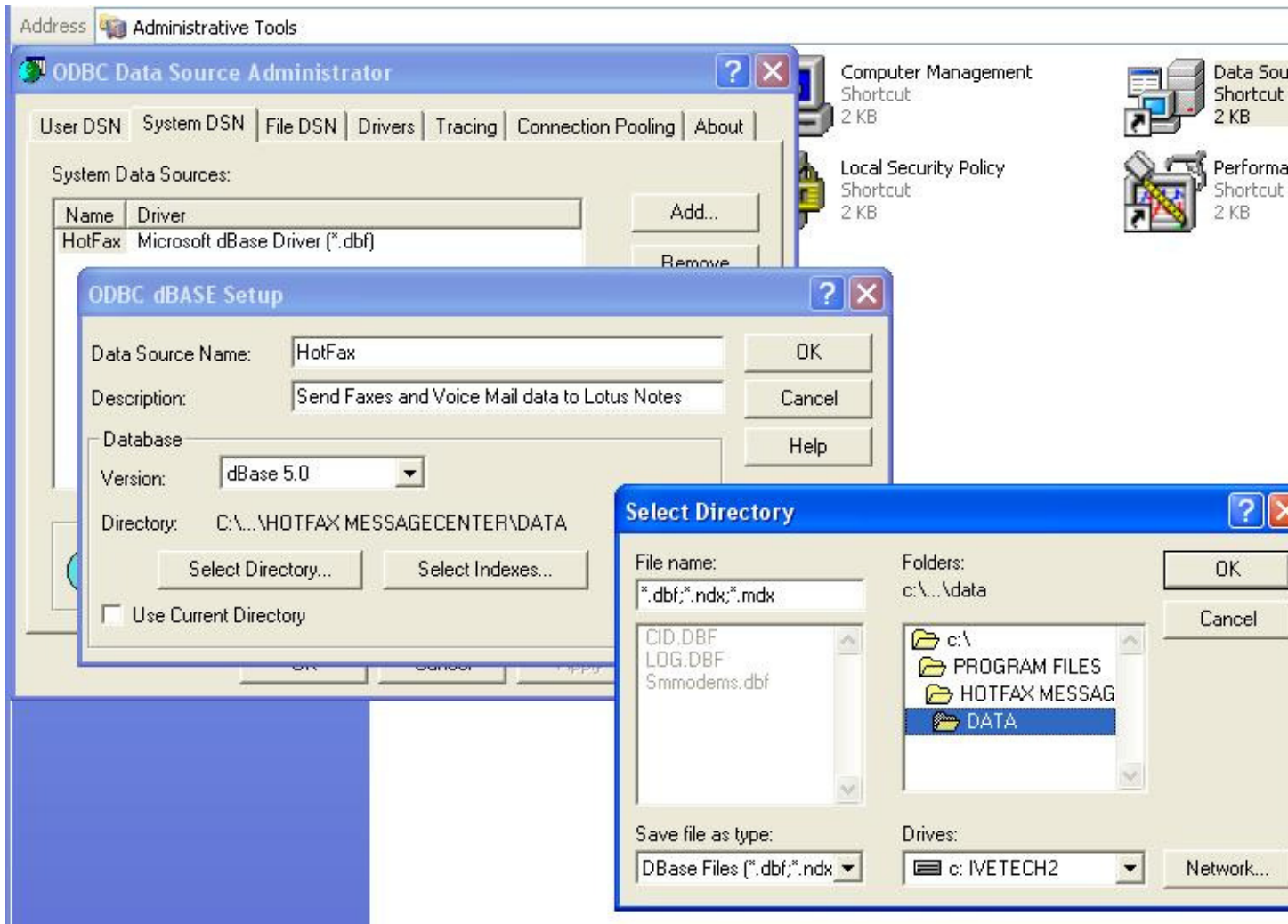


2. Please skip this step if you do NOT have a Voice Fax modem, otherwise, configure HFMC to automatically answer incoming fax calls as seen in Mailbox Setup below. Optionally, you can configure it to receive both voicemails and faxes assuming you installed a Voice Fax modem in the server. If you are configuring voicemail verify "Convert sound card files when message is received" is selected as seen in the Voice Setup below. NOTE: Please check with your vendor if your Voice Fax modem requires a sound card. We recommend a controllerless (dsp chip) Voice Fax modem since it does not require a sound card (win or soft modems require a sound card). The caller voicemail sound card files (.WAV) are initially saved to the server file system (i.e. C:\Program Files\HotFax MessageCenter\INBOX), but then deleted after they are copied to the H-Fax Voicemail Center Notes database.





3. Open the Control Panel, and click - Administrative Tools - Data Source (ODBC) to configure an ODBC source as seen in the screenshot below.



4. Click the "Edit Profile" button to configure the H-Fax Voicemail Center Lotus Notes database. NOTE: If you specify a Lotus Notes mailing list group and clicked the "Enable Scheduler" button using your Lotus Notes ID you will not receive an email notification if you are a member in this group. Domino assumes you are the sender and will not send you an email if you are also a member of the group.

5. Click the "Enable Scheduler" button in the H-Fax Voicemail Center database using a Lotus Notes ID which has unrestricted LotusScript access as specified in the Domino server document security tab. NOTE: The scheduled LotusScript agent in the database is executed agent every 5 minutes which essentially integrates Domino with HFMC for Windows. The H-Fax Voicemail Center database must reside on the Domino server where you installed HFMC for Windows in the steps above. To prevent security warning messages you must either notify your Lotus Notes Administrator to Sign the database design using the Domino Administrator Client, or you can add "/IVE" to your Notes client ECL with full access as seen below.

- A. (R8/R7/R6) Click File - Security- Security - [password] - What Others Do - Using Workstation - Add */IVE - Select all checkboxes - OK
- B. (R5) Click File Preferences - Users Preferences - Basics - Security Options - Add */IVE - Select all checkbox options - OK

PURCHASE INFORMATION

Prices for this product are listed at web address <http://www.ivesco.com/order>. We accept all major credit cards and company checks. Additional charges apply for shipping & handling and international checks. Payment options are listed below.

- 1. Phone Credit Card Order: 1-877-848-9010
- 2. Fax Purchase Order: 646-452-9944
- 3. Online Credit Card Order: <http://www.ivesco.com/order>
- 4. Mail Purchase Order: See postal address below

APPLICATION SUPPORT

IVE Technologies
 330 East 38th Street, Suite 39G
 New York, NY 10016-9800 USA

ive.support@ivesco.com
 Tel: 1-877-848-9010 (Toll free)
 Tel: 212-599-2048 Fax: 646-452-9944

